

McAfee VirusScan 8.8i Installation and Tips

OVERVIEW

UAHuntsville has an agreement with McAfee to distribute McAfee VirusScan 8.8i to Students.

A self-extracting install package has been created by OIT that simplifies the installation of McAfee VirusScan. The document will show you the installation process along with some McAfee VirusScan tips.

The software is currently available from chargerware.uah.edu .

Students only

Log into ChargerWare and go to McAfee VirusScan.
Click the link as shown below to start the download.

McAfee VirusScan Available for Student use

Contact the OIT Help Desk at 256-824-3333 or helpdesk@uah.edu if you have questions or require assistance.

SUPPORTED OPERATING SYSTEMS

Supported Operating Systems are

Windows Vista, Windows 7, Windows 8, Windows 8.1, Windows 10
Windows Server 2008 & 2008R2, Windows Server 2012, Windows 2012R2
& Windows 2016.



On systems running Windows 10 Creators Update with Device Guard enabled, you must install Microsoft KB4016250 before installing this patch. For information about how this issue affects McAfee products, see [KB89029](#).

This release of VirusScan Enterprise supports in-place operating system upgrades from Windows 7, 8, and 8.1 to Windows 10 RTM (10.0.10240), Windows 10 1511 (10.0.10586), Windows 10 1607 (10.0.14393), and Windows 10 1703 (10.0.15063).

PREREQUISITES

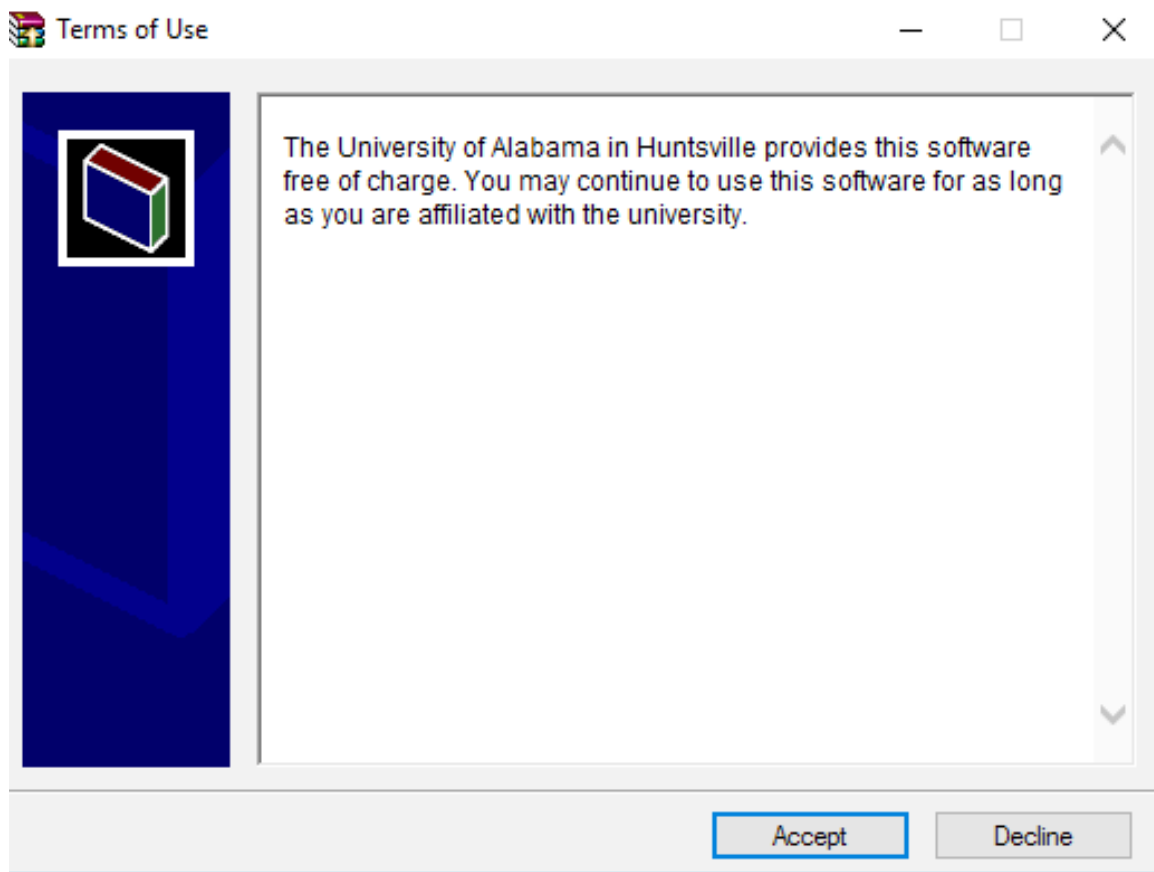
To avoid problem with the installation process the following are recommended:

- You remove **all** other Anti-Virus software packages from your computer.
- You don't install McAfee VirusScan 8.8i unless you have a minimum of 512MB of memory, but 1GB of RAM recommended.
- You are logged in as an Administrator.

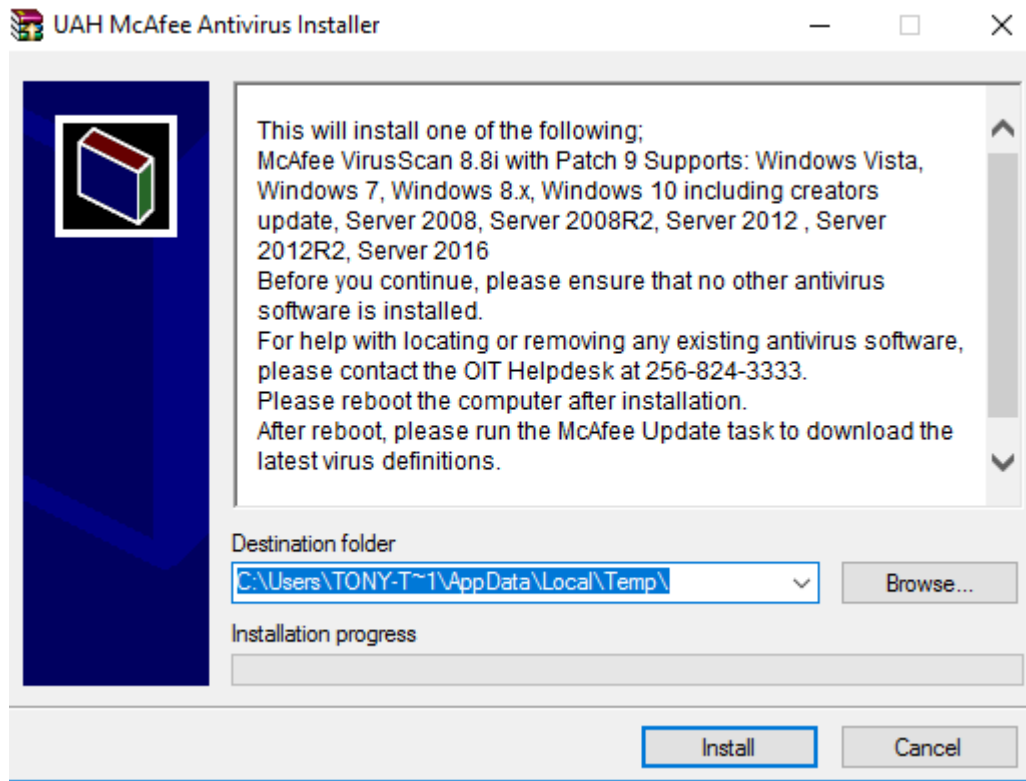
INSTALLATION INSTRUCTIONS

Note: On Windows Vista, Windows 7, Windows 8.x, Windows 10, Server 2008, Server 2012 and Server 2016 systems, you must accept any prompts originating from the Operating Systems UAC (user access control).

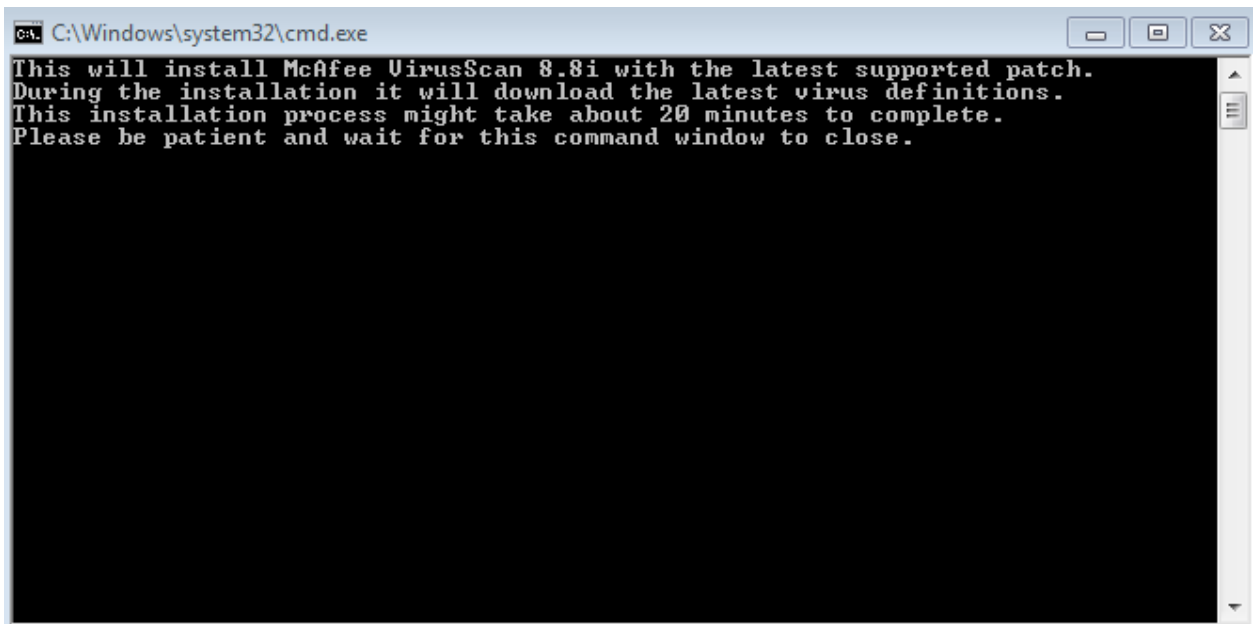
1. Download and copy the installation executable to your computers desktop.
2. Right click the executable and select "Run As Administrator"
3. A Terms of Use window will display. Click **Accept**.



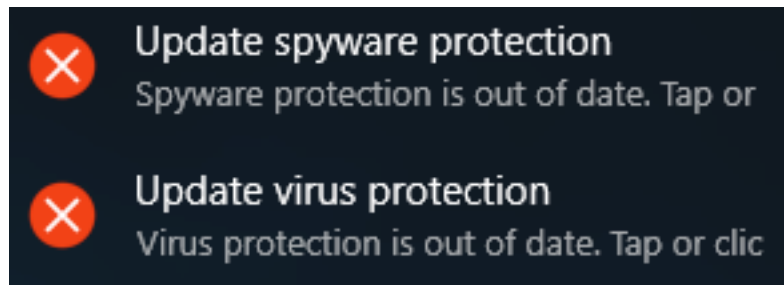
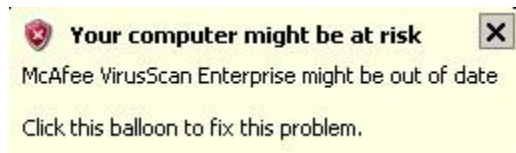
4. Please read the information screen and then click **install**.



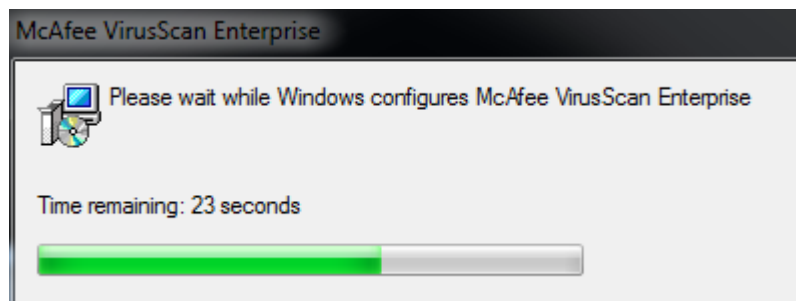
5. The following command window will open up. It may take about 20 minutes for the installation to complete. Wait for the window to close.



Note: You may get a messages “Your computer might be at risk” or others as shown below These messages are expected and can be ignored.



McAfee will download the latest virus protection. The duration of this process will depend on the speed of the network since McAfee is downloading a 127MB plus file. Please be patient during this process. The installation will be complete when the command window in step 5, closes. Wait for it to close before proceeding.

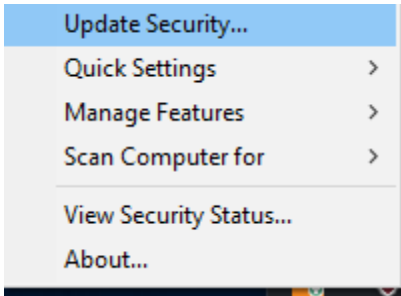


GETTING THE LATEST VIRUS DEFINITIONS

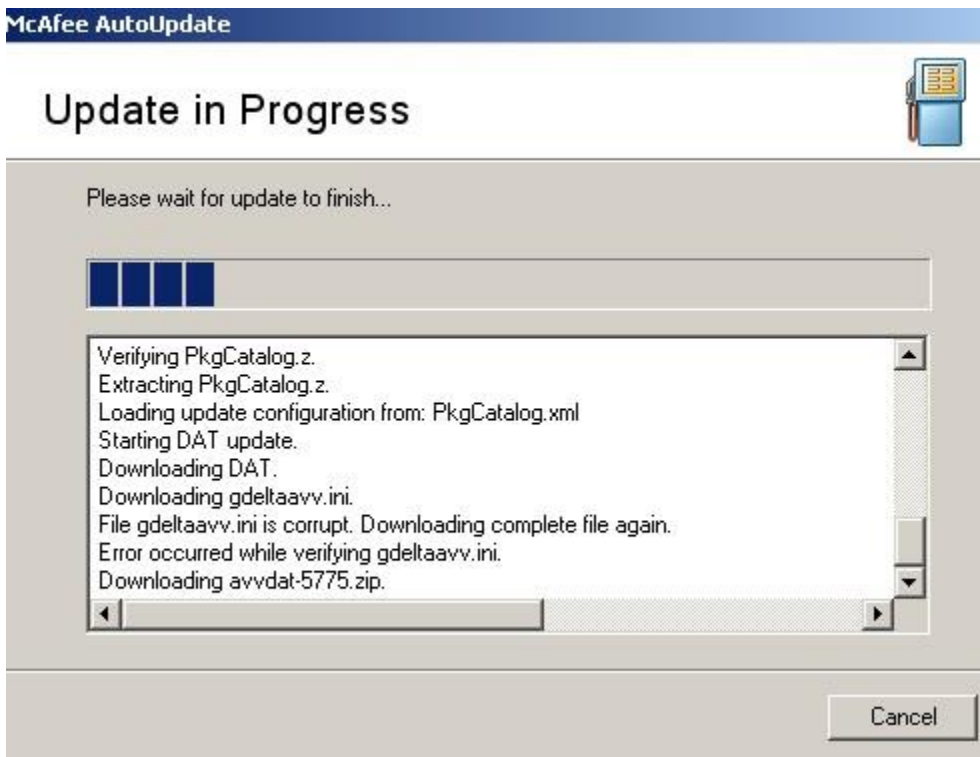
1. Log into your computer after the reboot and make sure that you are connected to the Internet.
2. In the lower right of the system tray, right click the McAfee Shield.



3. Select the option **Update Security**. This will start the download of the latest McAfee Virus definitions.



4. A progress window opens. Make sure that it starts downloading the latest DAT. This may take several minutes. This progress window closes automatically when it is done.



Update in Progress



Please wait for update to finish...


Progress bar: 24 blue segments, all filled.

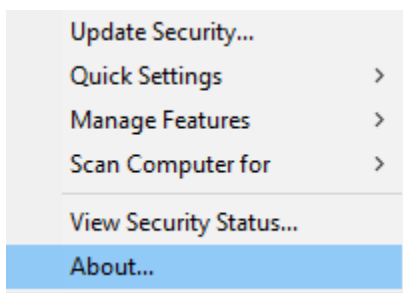
Log text:

```
Verifying MsgBusCertsUpdater.McS.  
Searching available updates for McAfee Agent Message Bus Certs.  
Downloading PkgCatalog.z.  
Verifying PkgCatalog.z.  
Extracting PkgCatalog.z.  
Loading update configuration from: PkgCatalog.xml  
Verifying AUEngineContentDetection.McS.  
Verifying amcore.mcs.  
Update Finished
```

Auto close in 24 seconds.

Close

5. Right click the McAfee shield  in your system tray and select **About** .



6. Make sure that the “DAT Created On:” date is reporting the current date or one day previous. That will indicate you are up-to-date.

| McAfee VirusScan Enterprise + AntiSpyware Enter... | |
|---|--------------------|
| Version number: | 8.8.0 (8.8.0.1804) |
| Build date: | 3/31/2017 |
| Anti-virus License Type: | licensed |
| Scan engine version (32-bit): | 5800.7501 |
| Scan engine version (64-bit): | 5800.7501 |
| DAT version: | 8486.0000 |
| DAT Created on: | 4/2/2017 |
| Number of Signatures in extra.dat: | 0 |
| Name of threats that extra.dat can detect: | None |
| Buffer Overflow and Access Protection DAT version: | 750 |
| Installed Patches: | 9 |
| Installed Modules: | |

SCHEDULING A SYSTEM SCAN

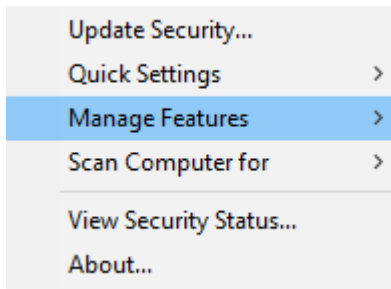
Your system should be scanned at least weekly. A scheduled scan should be executed when your system is up and running and not being used. It cannot be executed when your system is in Sleep mode.

Below we will show the steps necessary to schedule a system scan. We recommend that you set at least a weekly scan.

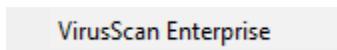
1. Right click the McAfee shield in the lower right of the system tray.



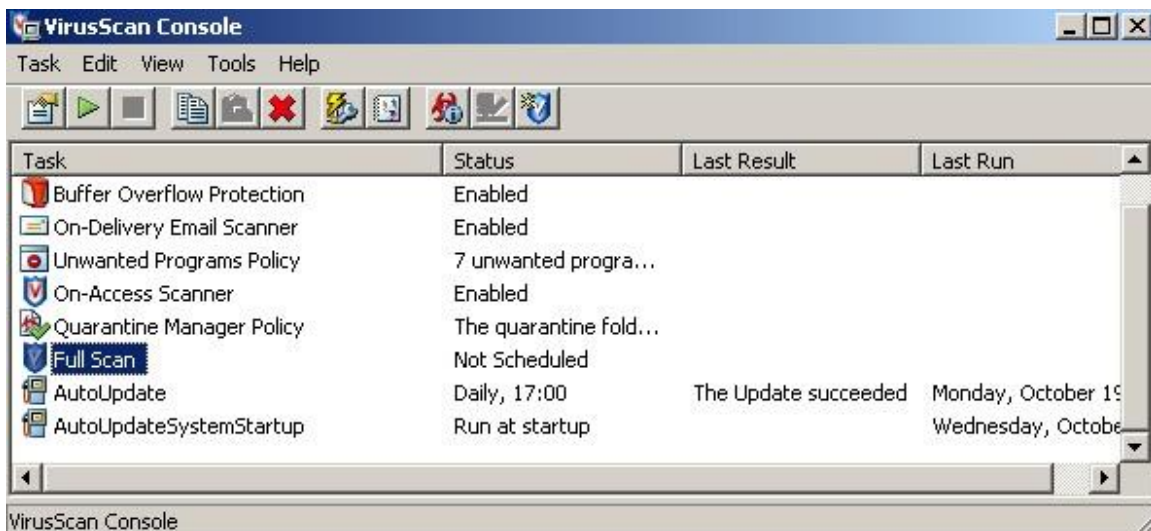
2. Select **Managed Features**.



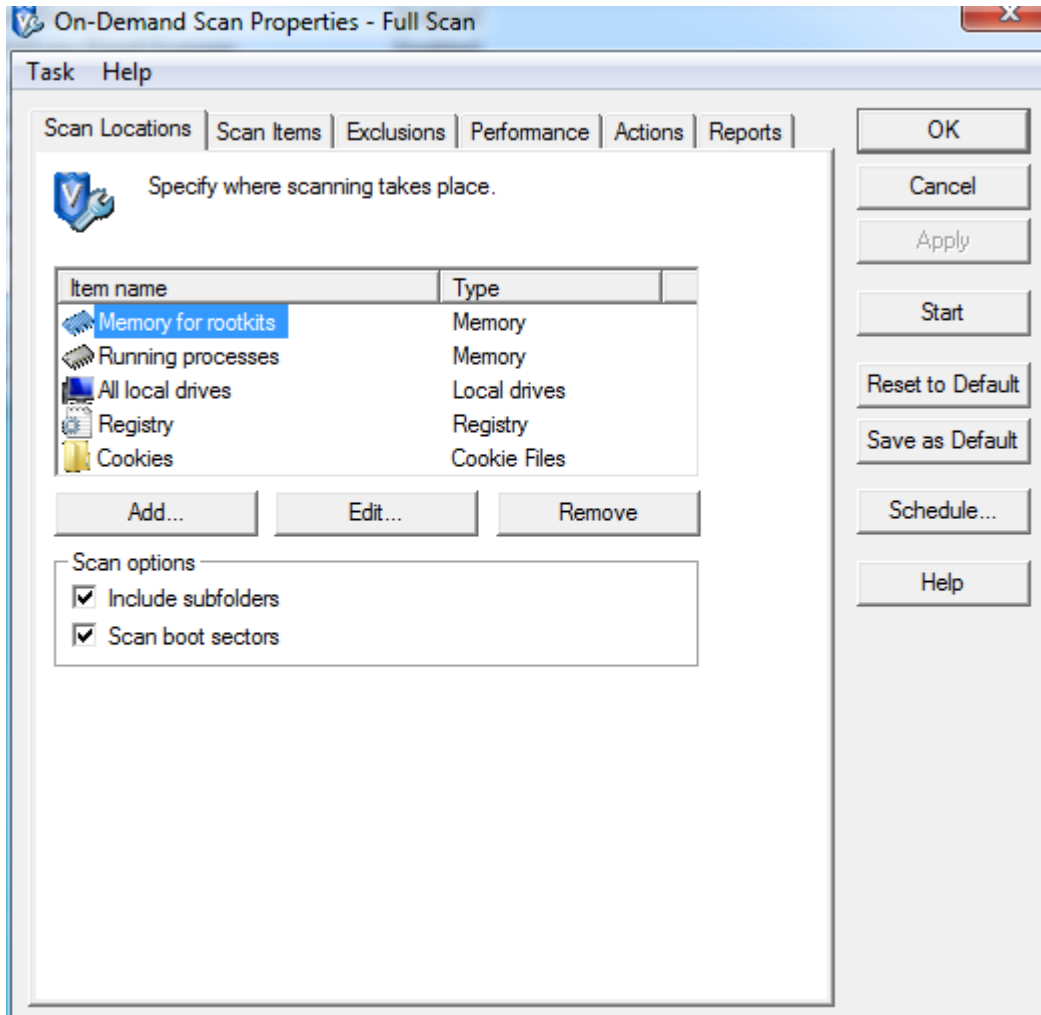
3. Select **VirusScan Enterprise**.



4. Double click on **Full Scan**.




5. Accept the default settings for each of the tabs.



Task Help

Scan Locations | Scan Items | Exclusions | Performance | Actions | Reports

 Specify what items to scan.

File types to scan

- All files
- Default + additional file types (0) Additions...
- Specified file types (0) Specified...

Also scan for macros in all files

Options

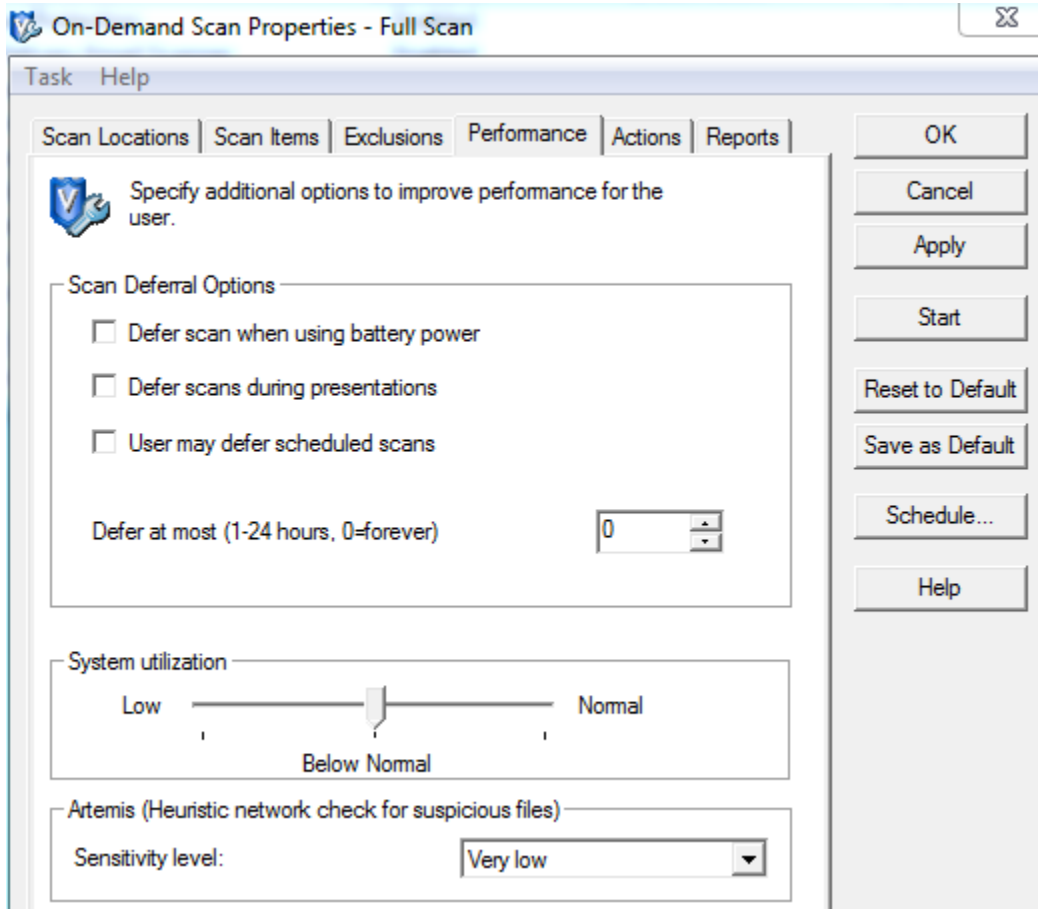
- Detect unwanted programs
- Decode MIME encoded files
- Scan inside archives (e.g. .ZIP)
- Scan files that have been migrated to storage

Heuristics

- Find unknown program threats
- Find unknown macro threats

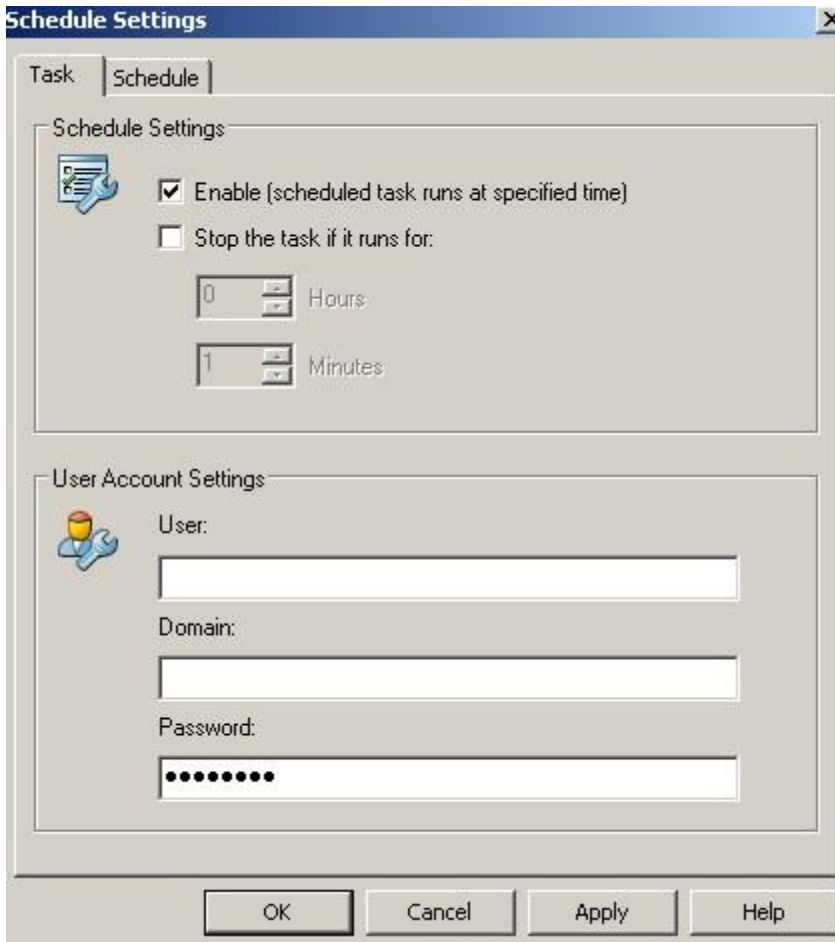
OK
Cancel
Apply
Start
Reset to Default
Save as Default
Schedule...
Help

6. On the **Performance** tab can select how much CPU resources that this scan will take. Scan time will increase when you lower the System Utilization. Move the slider to the middle under **Below Normal**. Click **Apply** to save your changes.



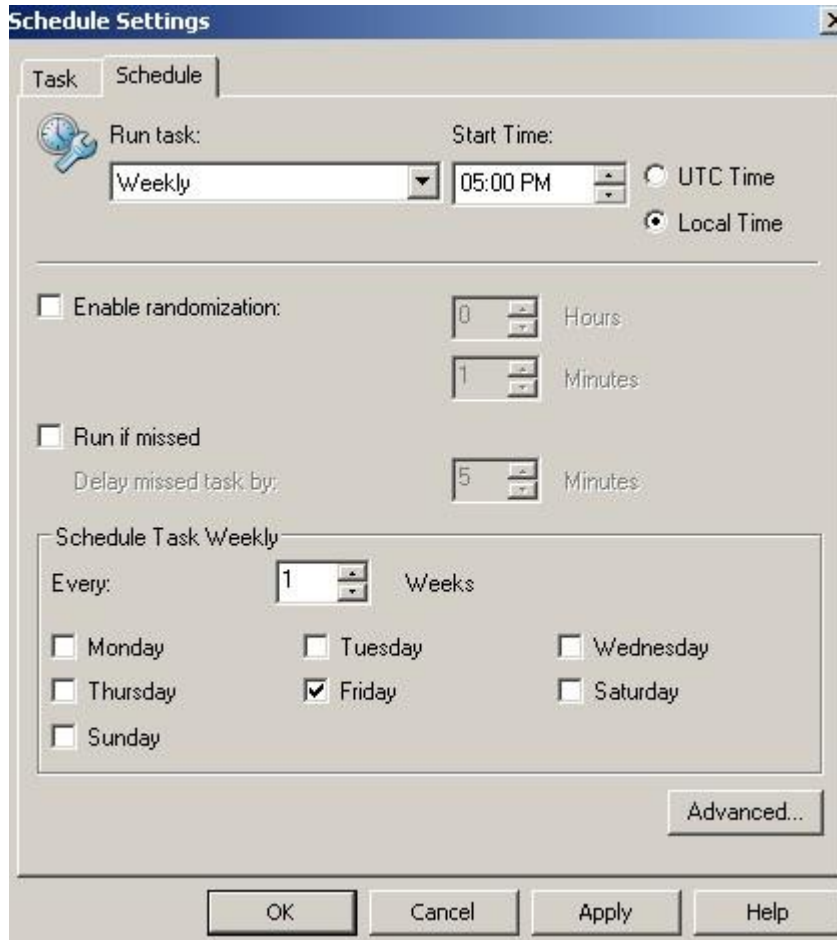
7. Click on **Schedule**.

8. On the **Task** tab, check **Enable** to enable scheduling.



9. On the **Schedule** tab, select a time to schedule the scan. In this example, a weekly scan every Friday at 5.00 PM will be performed. We would recommend that you perform at least one weekly scan.

10.

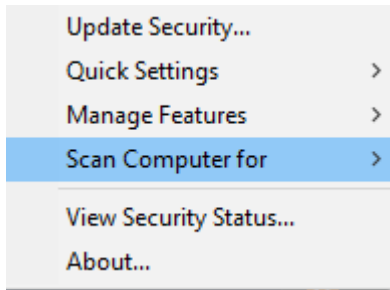


11. When you have selected a time and day, click **Apply** and then **OK**.
12. Close the **Schedule Settings** window to complete the scheduled task.

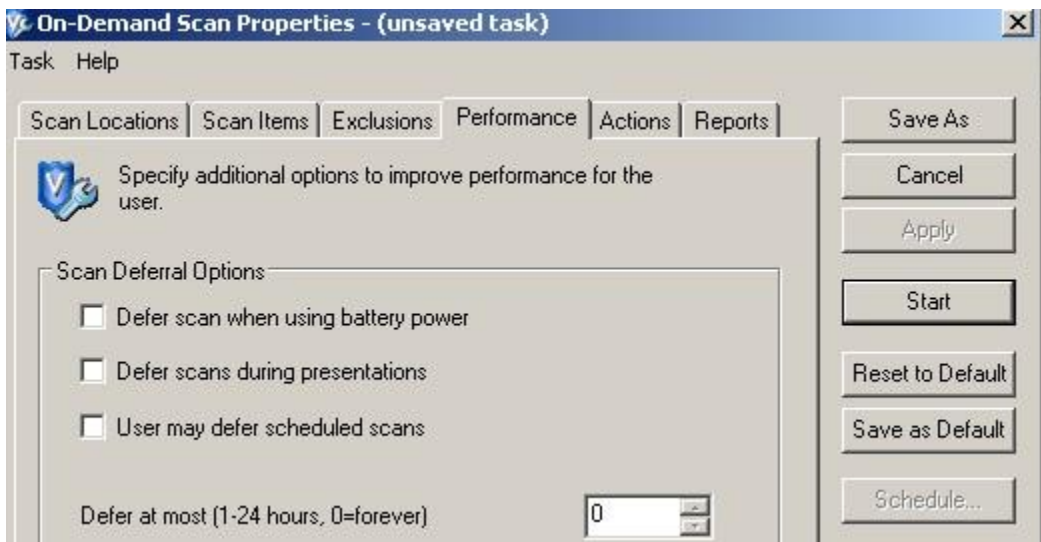
PERFORMING ON-DEMAND SCAN

Your system should be scanned at least weekly. An on-demand scan is a scan that you can start immediately and may be a better option than a scheduled scan because you know when the system will not be in use.

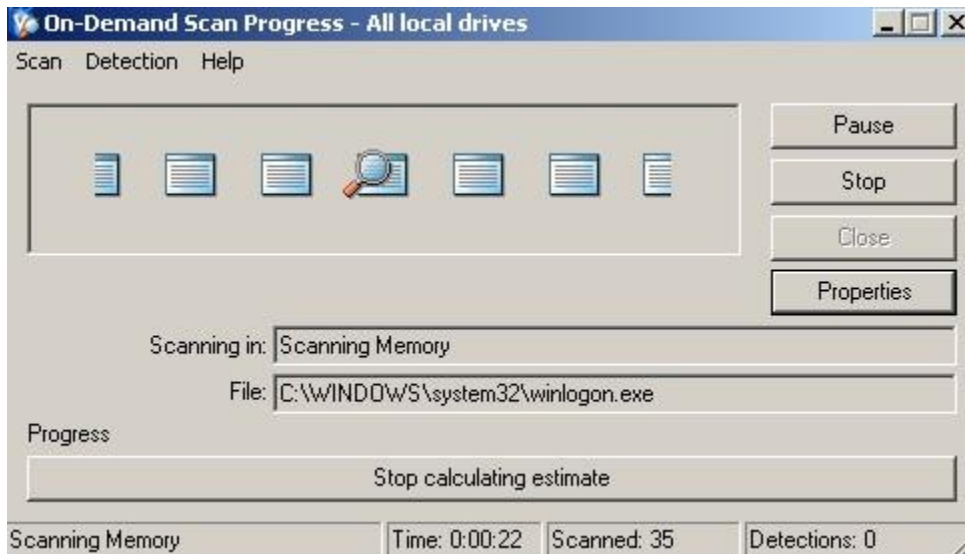
1. Right click on the McAfee shield  in the lower right system tray.
2. Select **Scan Computer for** and select **Threats**.



3. Accept all the defaults and then click **Start**.



4. A **Scan Progress** window displays the status of your on-demand scan. You can stop or pause it at any time.



REMOVING MCAFEE VIRUSSCAN 8.8i

Only remove McAfee for the following reasons:

- You need to reinstall due to a problem.
- You have left the University – the software needs to be uninstalled when you are no longer a UAHuntsville student.
- You prefer to use another type of Anti-Virus software like Norton, AVG etc.

Use the following steps to remove McAfee VirusScan.

1. Click **Start** and select **Control Panel**.

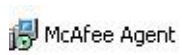
Note: For Windows 8, access the **Desktop** and pop-out the menu, then select **Settings** and **Control Panel**.

- For Vista/Windows 7/Windows 8.x & Windows 10 select **Uninstall a Program**.
2. **Select McAfee VirusScan Enterprise** and click **Remove** or **Uninstall**.



Size 79.71MB

3. Follow the prompts and any messages that might come up from Windows Vista/Windows 7/Windows 8 UAC (user access control).
4. Next uninstall the **McAfee Agent**.



McAfee Agent

Size 16.75MB

5. Follow any prompts.
6. Reboot your computer after removing.